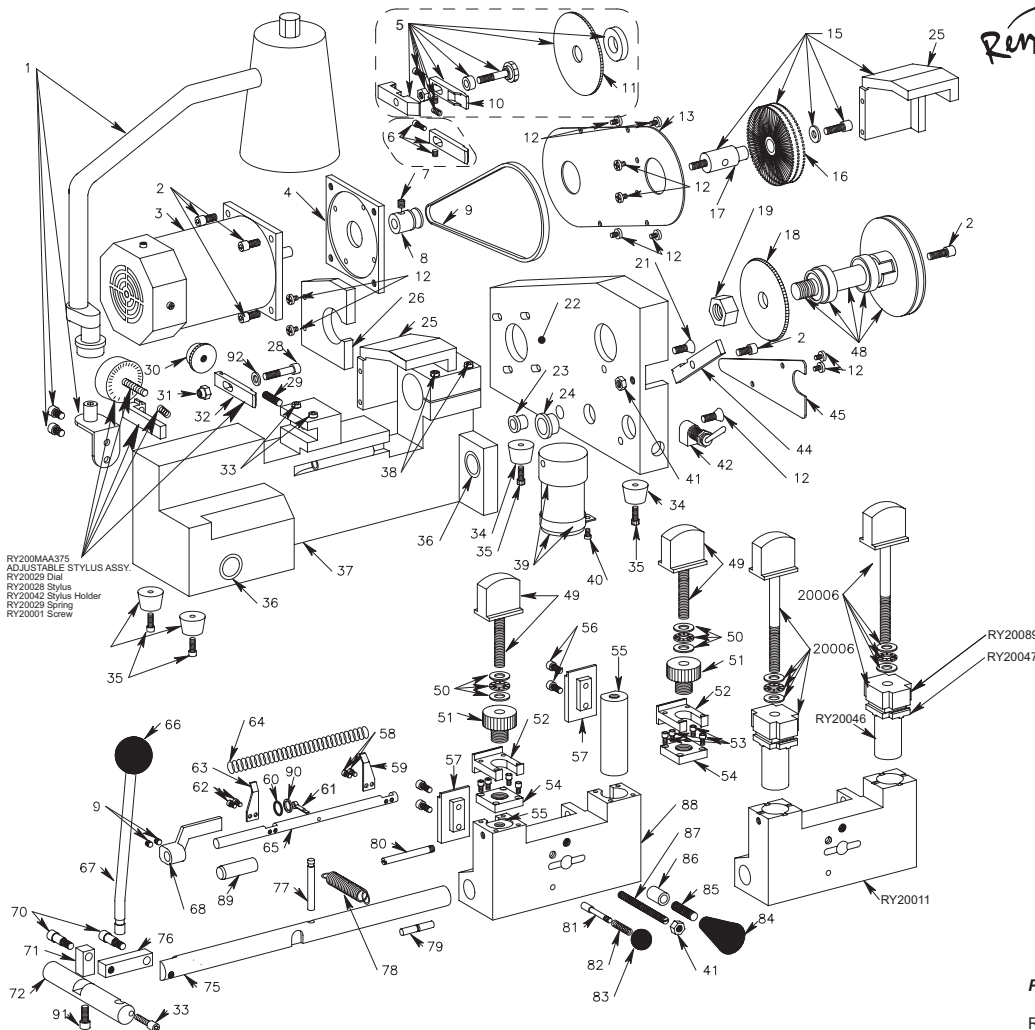


# RY100 & RY200 Key Machine



Part Drawing maybe different than actual part-Rytan reserves the right to make changes

## RY100 & RY200 PARTS LIST

- |  |   |
|--|---|
| 1- RY39 Lamp Kit                         | 40-RY9065 Cap Screw                     |
| 2- RY9069 Cap Screw                      | 41-RY9055 Hex Jam Nut                   |
| 3- RY10038 A.C. Motor                    | 42-RY9041 Switch                        |
| 4- RY10033 Motor Mounting Plate          | 44-RY10035 Cutter Shaft Lock            |
| 5- RY111 or RY222 Slotter Kit (optional) | 45-RY10017 Access Plate                 |
| 6- RY118 or RY218 Standard QC Stylus     | 48-RY84 Ball Bearing Spindle Assembly   |
| 7- RY9048 Set Screw                      | 49-RY80 Key Vise Knob & Stud            |
| 8- RY10037 Motor Pulley                  | 50-RY82 3-Piece Thrust Bearing Assy.    |
| 9- RY9039 Drive Belt                     | 51-RY10041 Top Jaw Clamp Knob           |
| 10-RY118 or RY218 Slotter Stylus         | 52-RY89 or RY20089 Top Vise Jaw         |
| 11-RY115 Slotter Cutter                  | 53-RY9063 Cap Screw                     |
| 12- RY9046 Phillips Screw                | 54-RY10045 Top Plate                    |
| 13-RY10016 Belt Guard                    | 55-RY10046 Vise Plunger                 |
| 15- RY101 Wire Brush Kit (optional)      | 56-RY9062 Cap Screw                     |
| 16- RY9074 Replacement Wire Brush        | 57-RY10047 or 20047 Bottom Vise Jaw     |
| 17- RY10101 Arbor                        | 58-RY9107 Slot Head Screw               |
| 18- RY10030 or RY20030 Cutter            | 59-RY10048 Key Gauge R.H.               |
| 19- RY10036 Cutter Hex Nut (Left Hand)   | 60-RY9108 O-Ring                        |
| 20- RY9037 Ball Bearing Assembly         | 61-RY9279 Cotter Pin                    |
| 21-RY9054 Flat Head Screw                | 62-RY9061 Cap Screw                     |
| 22-RY10012 Motor Bracket                 | 63-RY10050 Key Gauge L.H.               |
| 23- RY9053 Strain Relief                 | 64-RY10061 Key Gauge Spring             |
| 24-RY9052 Bushing                        | 65-RY10049 Key Gauge Shaft              |
| 25-RY10013 Guard                         | 66-RY9027 Lever Knob                    |
| 26-RY107 Cutter Shield (optional)        | 67-RY10018 Lever Shaft                  |
| 28-RY9042 Cap Screw                      | 68-RY114 Key Gauge Protector (optional) |
| 29-RY9029 Set Screw                      | 69-RY10048 Key Gauge R.H.               |
| 30-RY10029 Stylus Adjustment Knob        | 60-RY9108 O-Ring                        |
| 31-RY9056 Nylon Lock Nut                 | 61-RY9279 Cotter Pin                    |
| 32-RY10028 or RY20028 Stylus             | 62-RY9061 Cap Screw                     |
| 33-RY9057 Cap Screw                      | 63-RY10050 Key Gauge L.H.               |
| 34-RY9145 Rubber Foot                    | 64-RY10061 Key Gauge Spring             |
| 35-RY9058 Cap Screw                      | 65-RY10049 Key Gauge Shaft              |
| 36-RY9024 Bronze Oilite Bearing          | 66-RY9027 Lever Knob                    |
| 37-RY10010 Machine Base                  | 67-RY10018 Lever Shaft                  |
| 38-RY9044 Cap Screw                      | 68-RY114 Key Gauge Protector (optional) |
| 39-RY92 Capacitor Assembly               | 69-RY9003 Set Screw                     |

- |                                      |
|--------------------------------------|
| 70-RY9059 Shoulder Screw             |
| 71-RY10020 Drive Link                |
| 72-RY10019 Drive Shaft               |
| 75-RY10022 Carriage Shaft            |
| 76-RY10021 Shaft Link                |
| 77-RY10026 Carriage Shaft Spring Pin |
| 78-RY10025 Carriage Extension Spring |
| 79-RY9200 Retaining Pin              |
| 80-RY10056 Key Ring Stud             |
| 81-RY10023 Carriage Release Stud     |
| 82-RY9025 Carriage Release Spring    |
| 83-RY9038 Carriage Release Knob      |
| 84-RY9028 Carriage Knob              |
| 85-RY10086 Threaded Stud             |
| 86-RY10060 Knob Spacer               |
| 87-RY10087 Carriage Over-Travel      |
| 88-RY10011 or RY20011 Carriage       |
| 89-RY9278 Vinyl Cap                  |
| 90-RY10067 Flat Washer               |
| 91-RY9047 Cap Screw                  |
| 92-RY9273 Plastic Small Washer       |

## Convert your RY100 to 4-way jaws

Order part numbers:

- RY20005- Carriage assembly
- RY101-Wire Brush Kit
- RY114- Key Gauge Protector (optional)
- RY20032 RY20030 Cutter with RY20028 stylus (optional)

Call us!

## PARTS NOT ILLUSTRATED

- RY9040 Power Cord
- RY9051 Wire Nut
- RY88 12 Volt D.C. Motor
- RY99 12 Volt Wiring Kit
- RY100104 Instruction Manual

## OPTIONAL ACCESSORIES/PARTS

- RY39 Lamp Kit
- RY81 Key Gauge Assembly
- RY82 Key Vise Thrust Bearing
- RY83 Carriage Drive Linkage
- RY84 Ball Bearing Spindle Assy.
- RY85 Carriage Release Assy.
- RY101 Wire Brush Kit
- RY107 Cutter Shield
- RY111 Slotter Kit
- RY114 Key Gauge Protector
- RY120 Quick Change Kit

## RY200 Parts

- RY218 Quick Change Standard Stylus
- RY220 Standard Cutter & Q.C. Stylus
- RY222 RY200 Slotter Kit
- RY20011 Carriage
- RY20005 Carriage Assy. with 4 Way Jaws
- RY20006 Knob assb. w/ bearings
- RY20028 Stylus
- RY20030 Cutter for RY200
- RY20046 Vise Plunger
- RY20047 Bottom Jaw
- RY20089 Top Jaw
- RY200375 MicroAdjust